



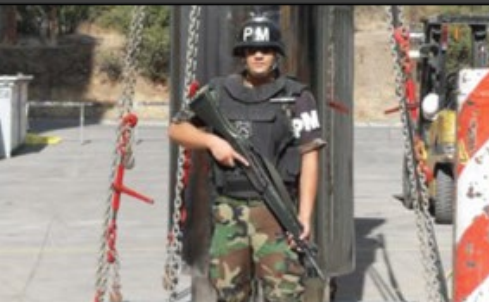
U.S. DEPARTMENT OF
ENERGY



LANL-CHAMP RECOMPETE SITE OVERVIEW

October 19, 2022

ENABLING MULTIPLE PROGRAMS



NONPROLIFERATION



EMERGENCY RESPONSE



NAVAL REACTORS



DEFENSE PROGRAMS

- Introductions



A - E Firms



- Pausing and Stopping Work

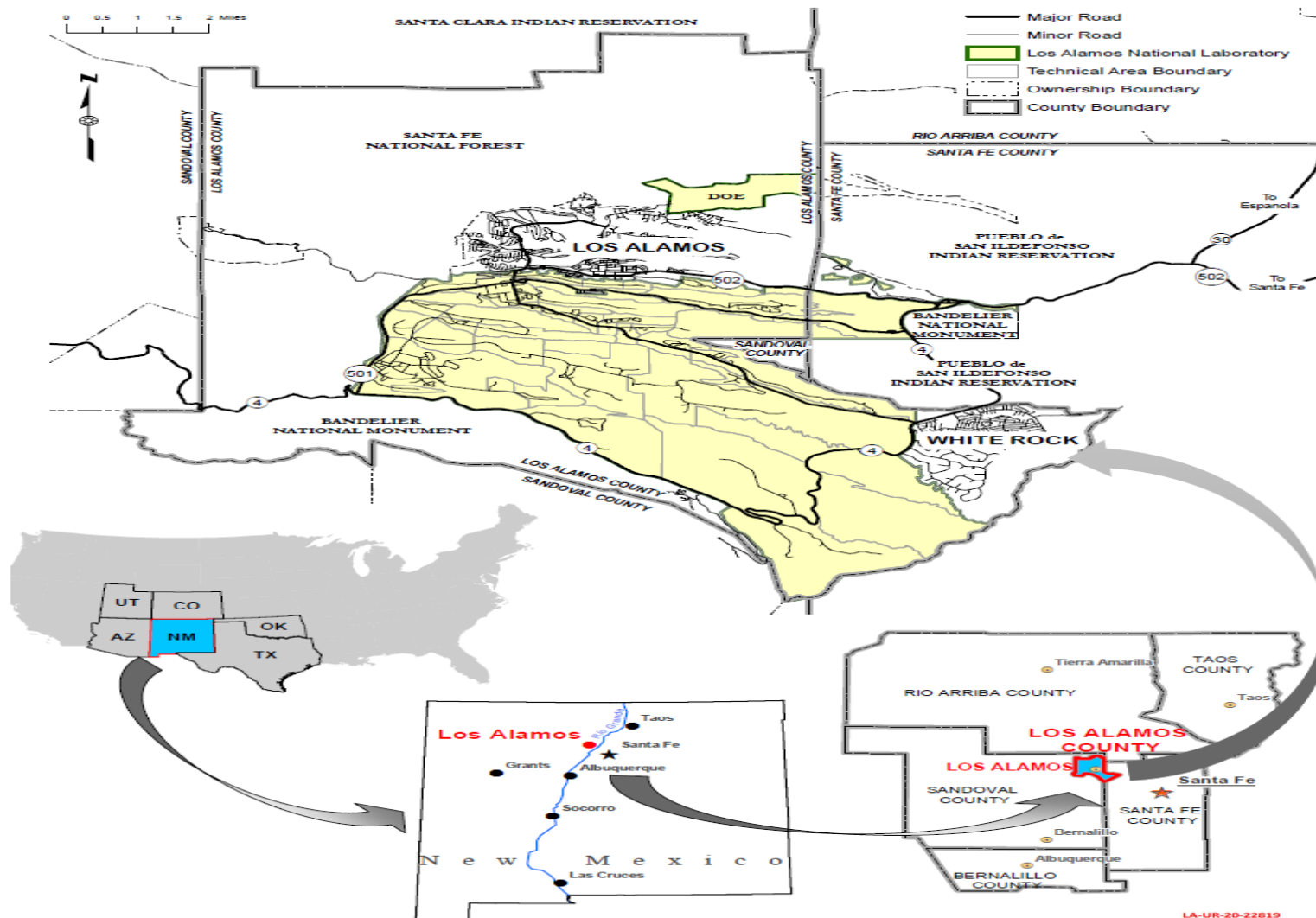
*SCOR Principle #5, A **questioning attitude** is cultivated*

- On February 26, 1980, the US Supreme court ruled that workers have a right to refuse work when there was a reasonable concern that death or serious injury or illness might occur performing the job. This decision stemmed from a 1974 case against Whirlpool Corp. in which two workers refused to crawl out on a screen from which a co-worker had fallen to his death only nine days earlier. (Scott Gaddis, Dec 02, 2019, OSH online) At LANL, in addition to Stop Work, we have another great tool and that is Pause Work. It is our **RIGHT**, and **RESPONSIBILITY**, to pause when safety, quality, or security are at risk.
- **Stop Work**—To cease work involving an activity, operation, program, or facility because of imminent danger or hazards or conditions that cannot be readily fixed.
- **Pause Work**—To interrupt or temporarily cease an activity to mitigate hazards, revise safety planning or work-control documents, respond to worker concerns or other safety, health, environmental, or waste generation non-conformance needs that do not meet the criteria necessary for formal stop work and restart. Generally, pause work will be of a short duration and involve situations that do not constitute an immediate danger to life, health, or the environment.

- Pause Work gives us the ability to take a step back to correct minor issues, consult with your supervision, and remove uncertainty from your path forward. It gives you the opportunity to fix small issues, so they don't become big issues.
- Workers and their line supervision and line management may resume work after a pause without formal readiness review or readiness assessment.
- Examples of pause work opportunities:
 - Penetration locations fall into do not penetrate or unknown areas in the GPR markings
 - Permits are inadequate, not signed, missing, or not understood
- There are many other situations that would warrant a pause. Can you think of some examples you have run across lately? Have you paused work before? Have there been times you wish you had paused work but didn't? What were the outcomes? More information can be found in P101-18, Procedure for Pause/Stop Work and the Pause/Stop Work homepage



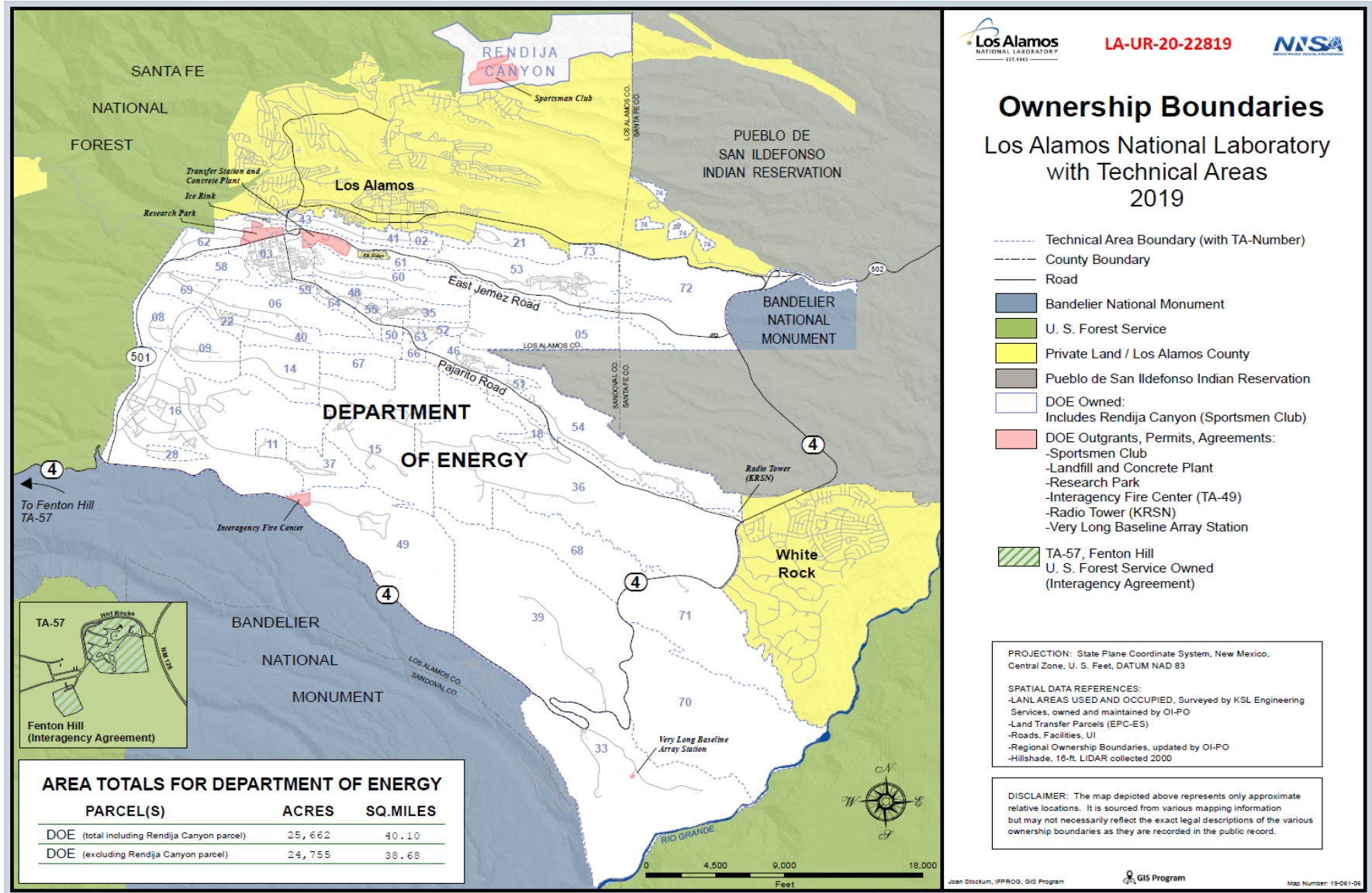
- *LANL Site Overview*
- *CHAMP Overview*
- *Integrated Work Management*
- *TA35-0124 Project Overview*
- *Questions*



GIS Program

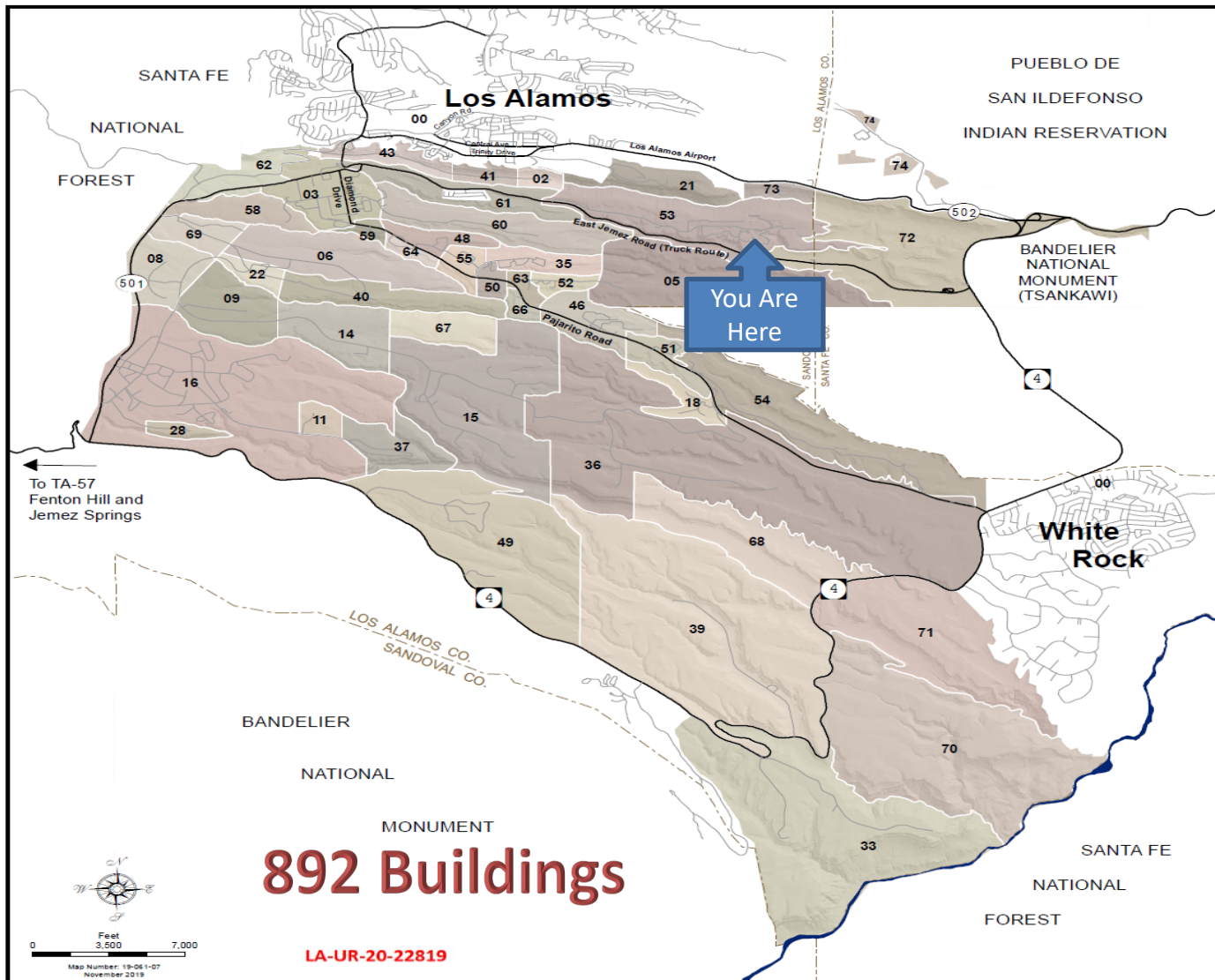
Map #19-061-08, Created by Brad McKown, IFFROG, Updated November 2019

LA-UR-20-22819



AREA TOTALS FOR DEPARTMENT OF ENERGY

PARCEL(S)	ACRES	SQ.MILES
DOE (total including Rendija Canyon parcel)	25,662	40.10
DOE (excluding Rendija Canyon parcel)	24,755	38.68



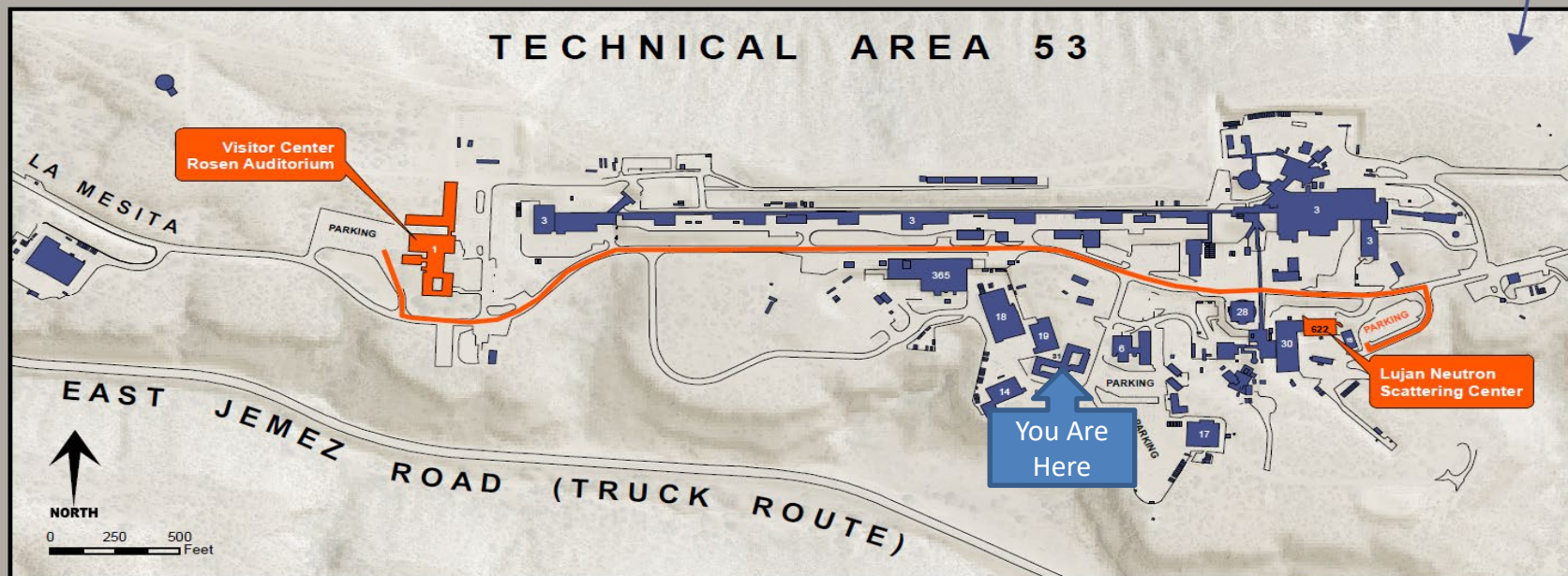
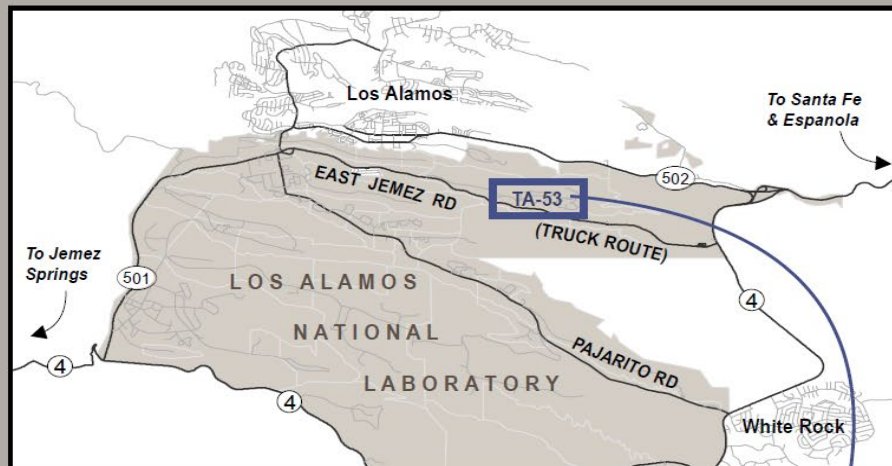
Technical Areas

- TA-00 OFF SITE
- TA-02 OMEGA SITE
- TA-03 SOUTH MESA SITE
- TA-05 BETA SITE
- TA-06 TWO MILE MESA SOUTH SITE
- TA-08 ANCHOR WEST SITE
- TA-09 ANCHOR EAST SITE
- TA-11 K SITE
- TA-14 Q SITE
- TA-15 R SITE
- TA-16 S SITE
- TA-18 PAJARITO LABORATORY
- TA-21 DP SITE
- TA-22 TD SITE
- TA-28 MAGAZINE AREA A
- TA-33 HP SITE
- TA-35 TEN SITE
- TA-36 KAPPA SITE
- TA-37 MAGAZINE AREA C
- TA-39 ANCHO CANYON SITE
- TA-40 DF SITE
- TA-41 W SITE
- TA-43 HEALTH RESEARCH LABORATORY
- TA-46 WA SITE
- TA-48 RADIOCHEMISTRY SITE
- TA-49 FRUJLES MESA SITE
- TA-50 WASTE MANAGEMENT SITE
- TA-51 ENVIRONMENTAL RESEARCH SITE
- TA-52 REACTOR DEVELOPMENT SITE
- TA-53 LOS ALAMOS NEUTRON SCIENCE CENTER
- TA-54 WASTE DISPOSAL SITE
- TA-55 PLUTONIUM FACILITY SITE
- TA-57 FENTON HILL
- TA-58 TWO MILE MESA NORTH SITE
- TA-59 OH SITE
- TA-60 SIGMA MESA SITE
- TA-61 EAST JEMEZ SITE
- TA-62 NORTHWEST SITE
- TA-63 PAJARITO SERVICE SITE
- TA-64 CENTRAL GUARD SITE
- TA-66 CENTRAL TECHNICAL SUPPORT SITE
- TA-67 PAJARITO MESA SITE
- TA-68 WATER CANYON SITE
- TA-69 ANCHOR NORTH SITE
- TA-70 RIO GRANDE SITE
- TA-71 SOUTHEAST SITE
- TA-72 EAST ENTRY SITE
- TA-73 AIRPORT SITE
- TA-74 OTOWI SITE

LANSCE Los Alamos Neutron Science Center Technical Area 53



LA-UR-20-22819



Joan Stockum, IFPROG, GIS Program November 2019 Map # 19-061-09

★ Project Sites



- **600+ facilities w/HVAC systems / 306 Mission Critical or Dependent**
- **3.5M SF Total / 1.8M SF Occupied (normal operation)**
- **200 are adequate / 60 are substandard or inadequate**

- **BAS Networked Facilities**
 - **62 Facilities are Networked on BAS / Only 18 equipped with flow sensors**
 - **35 Don't meet minimum ASHRAE Requirements**

▪ CHAMP since 2015

- 13 Assessments Completed
- 11 Designs Completed
- 3 Construction Projects Completed

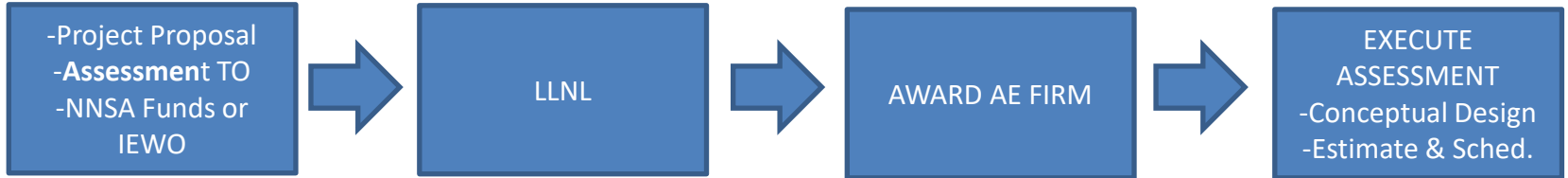
▪ Planned Work

- 52 Assessments in the Queue
- 16 Projects Ready for Design
- 8 Projects Ready for Construction
 - Desire to construct as many as possible

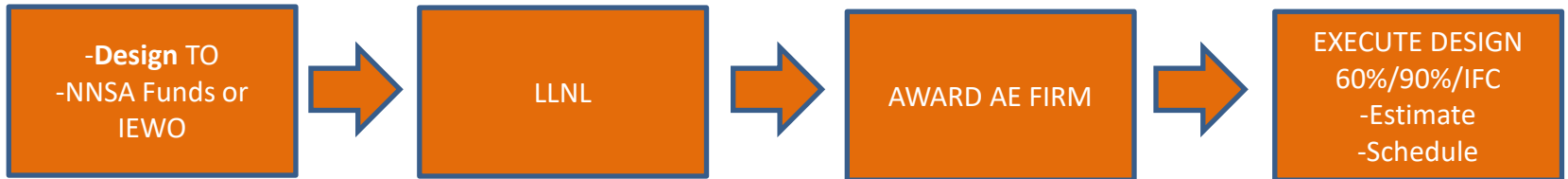


LANL uses 3 funding sources
and anticipates increased volume of work
NNSA / Recap / Indirect

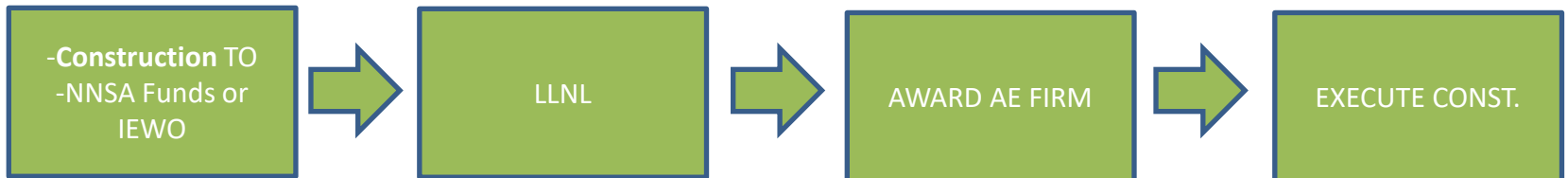
ASSESSMENT



DESIGN



CONSTRUCTION



CHAMP - LANL

TA22-0093 Project



Full HVAC Replacement

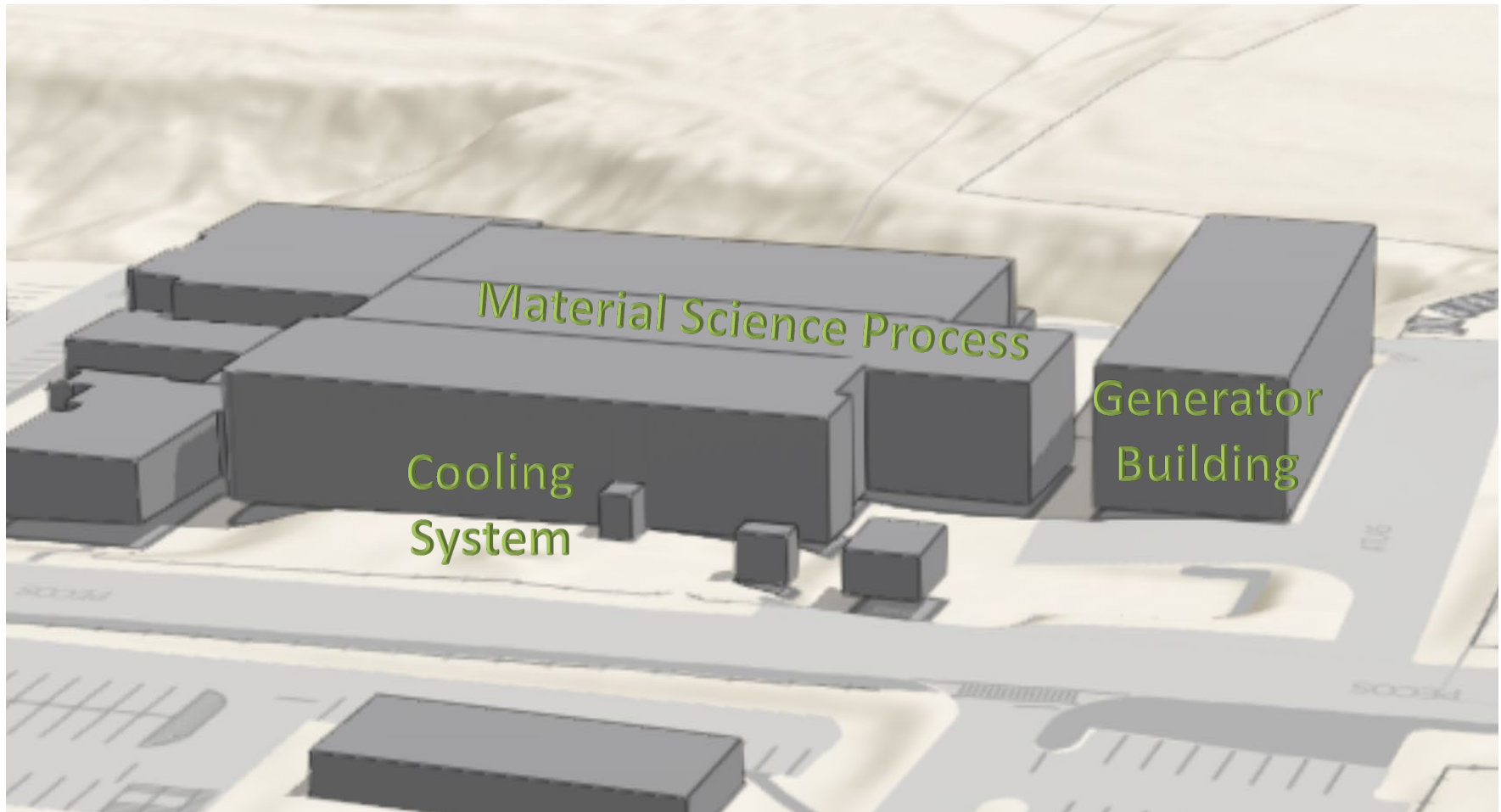
5 Rooftops / 5 FCU's / All new Exterior ductwork

HE Area



- ALL Work at LANL follows P300, Integrated Work Management
 - Key Topics
 - Facility Safety and Security
 - Electrical Safety
 - Penetration Operations
 - Spark or Flame Producing Operations
 - Hoisting, Lifting, & Rigging
 - Excavations
 - Fall Protection
 - Pausing & Stopping Work
 - Work Packages
 - Pre-Job and Post Job Activities
 - Integrated Work Documents
 - Permits & Approvals
 - Lessons Learned
- LANL CHAMP Integrated Project Team
 - MSS Deputy Division Leader – Shawn Hailey
 - MSS-DATA Group Leader – Jeff Brown
 - Project Manager – Jeff Moya
 - STR Cost & Schedule – Lori Vigil
 - Work Execution Manager – Rick Maestas
 - Work Exec./Training – Samuel Urioste
 - Work Exec./Training – Ben Maynes
 - Work Exec./Training – Marissa Garcia
 - Environmental Professional – Luke Smith
 - Project Engineer Lead – Jake Hilderbrand
 - Project Engineer Lead – Nick Espinoza
 - Safety – Rich Judy

Cooling System Replacement



Cooling System Replacement



CHAMP - LANL THANK YOU

Questions?

- Proceed down to TA35-124
- My team will transport you and return you to your vehicles
- Please leave all prohibited and controlled articles behind (Luke)
 - You are under the escort of the LANL CHAMP Team