



Managed and Operated by  
Consolidated Nuclear Security, LLC

# Cooling Heating Asset Management Program CHAMP

This document has been reviewed by a DC/RO and confirmed to be UNCLASSIFIED.

Name: Phillip Mustoe

Date: 09/29/2022

CNS eDC/RO ID: 501658

## Pantex CHAMP Points of Contact

LLNL Deputy Program Director Barb Quivey

LLNL Procurement Elizabeth Winkleman

CHAMP Program Manager Phil Mustoe 806-573-4071  
Brandy Ramirez 806-573-7183

CHAMP Project Manager Janet Dockery 806-573-7518

CHAMP Project Engineer Joe Grzelakowski 806-573-7392

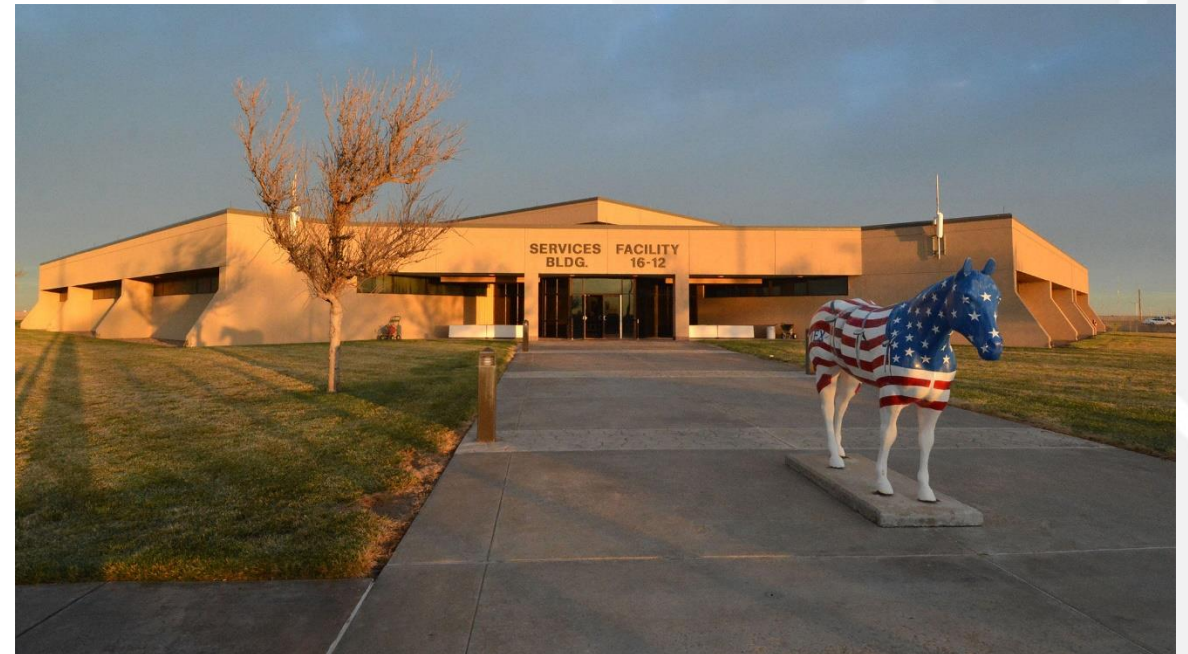
# PANTEX SITE FACTS

## Background



## Pantex Facts & History

- National Nuclear Security Administration (NNSA) owns northern 12,000 acres, leases remaining 6,000 acres from Texas Tech University, and owns 1,500 acres east of FM-2373.
- Most plant operations conducted in 580 buildings on roughly 2,000 acres
- Pantex Plant has several national security missions that protect our country and allies around the world.
  - Safeguarding special materials and assets
  - High explosives manufacturing and testing
  - Nuclear explosive operations
  - Analytic and scientific capabilities



# Manufacturing and Maintaining the Nuclear Deterrent

## Assembly and Disassembly

- Only site in United States authorized for full assembly and disassembly of nuclear weapons
- Workforce has specialized training and skills to deliver and maintain the nuclear weapons stockpile
- Requires disciplined and deliberate conduct of operations



# Managing the Total Nuclear Weapons in the Stockpile

## Dismantlement and Disposition

- Dismantle retired weapons to meet international treaty commitments
- Efficiently disposition components and materials
- Ensure nuclear material is in safe and secure storage



# Providing High Explosives (HE) for Nuclear Weapons

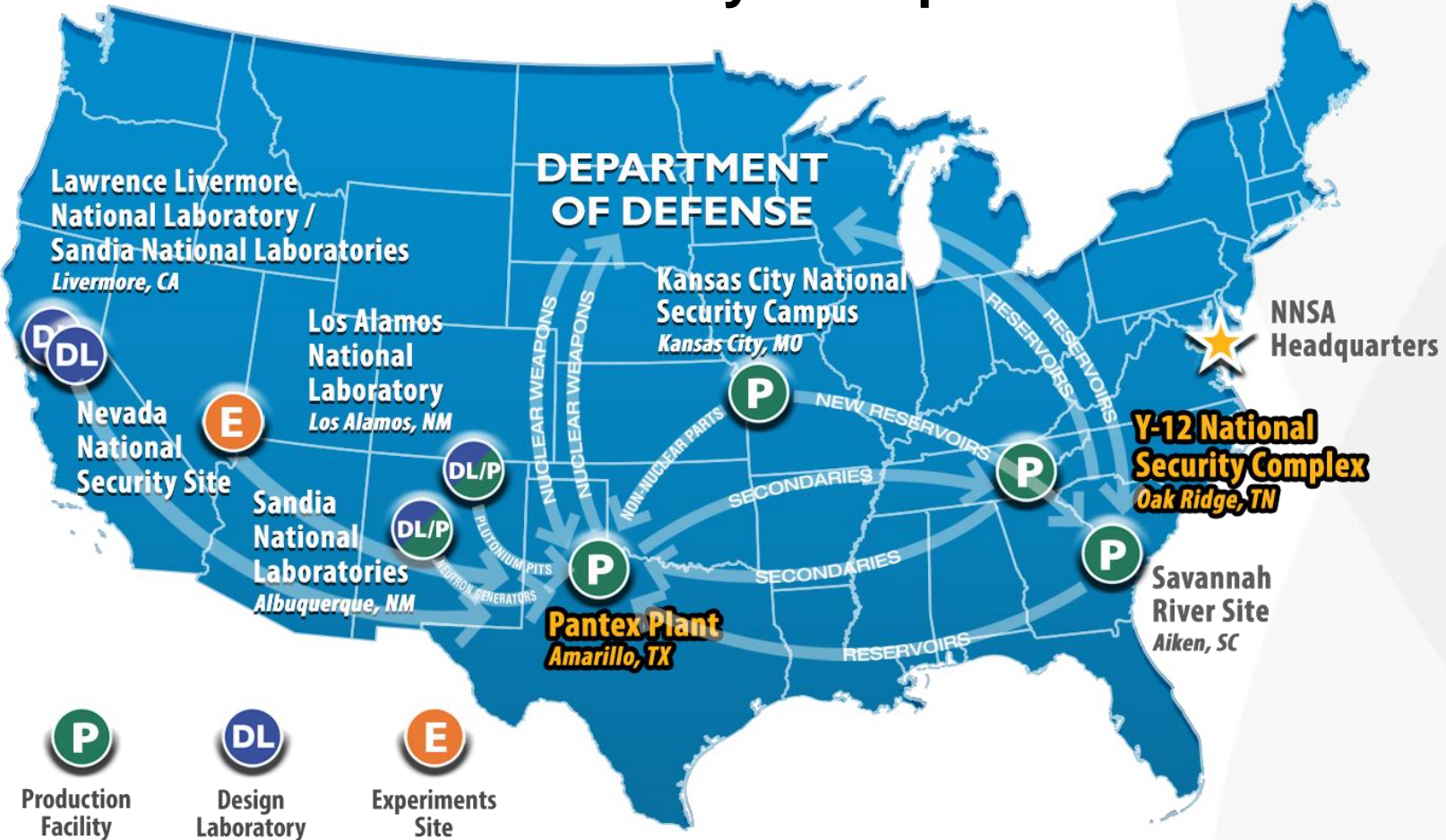
## Manufacture and Test HE

- Chosen by National Nuclear Security Administration (NNSA) as the High Explosives Center of Excellence for Manufacturing
- Manufacture and test high-explosive materials and components to support the nation's nuclear deterrent
- Operations include synthesis, formulation, pressing, machining, subassembly, as well as chemical, physical, mechanical, performance, and safety qualification testing



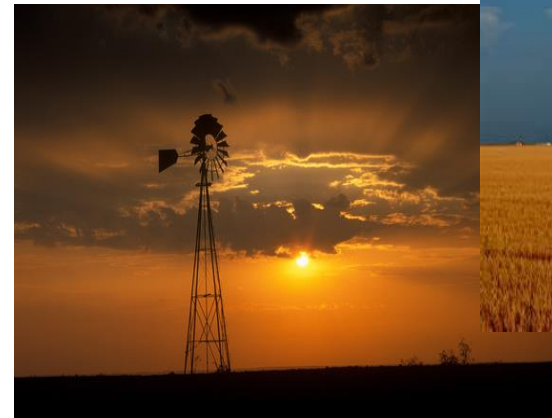
# All Roads Lead to Pantex

## Nuclear Security Enterprise



# PANTEX Climate & Weather

- Semi Arid Climate
- Annual precipitation:
  - ~10 inches of rain, on average per year
  - ~15 inches of snow per year
- Low Humidity
- Typical Temperature Range
  - High ~98°F in summer months (June – August)
  - Low ~22°F in winter months (January – February)
- Extreme temperatures above 100°F and below 0°F occur





# Pantex Access Requirements

## Access Information Requirement

- **Q-Cleared-Full name on HSPD badge, SSN and Month of birth**
  - Must be requested 7 working days in advance-Access control receives the completed, signed form 7 working days in advance.
  - 10 calendar day access
  - Need Escort to enter the MAA
- **Visitor Badge-Full name, SSN, employer and state of birth**
  - Must be requested 2 working days in advance-Access control receives the completed, signed form 2 working days in advance, your Pantex Project Manager will need additional days to complete.
  - 10 calendar day access
  - Security escort at all times to enter the LA, PA & MAA
- **PX-1196 Construction Badging**
  - Division 1 Specifications
- **Citizenship (must be US citizen)**

# Pantex Access Requirements

## Access Information Requirement

- **SUBCONTRACTOR employees working over 30 days will be required to complete the initial security and Counterintelligence briefing.**
  - Access will be terminated until requirements are met
- **Acceptable forms of proof of citizenship include:**
  - US-issued passports, original birth certificates with a raised state seal (or a certified copy), State Department form for US citizens born on military bases, original naturalization papers. Individuals who are Resident Aliens with green cards are NOT US citizens
- **All are required to have proper photographic identification (ID).**
- **COVID requirements**
  - N/A at this time

# Pantex Training for Contractors

## Radiation Requirement

- **Pantex Visitor's Guide to Radiological Safety**
  - General Employee Radiological Training (GERT) Read & Sign.

## Access Control

- **Access Control, in building 16-12 will require a minimum of 48 hours to process a contractors badge**
- **Please refer to Division 1 specifications section 01700**

## Lock Out Tag Out

- **Training for LOTO shall be coordinated with the STR**
- **Training is expected to take 1-2 hours**

## Specialty Training

- **Additional training will be identified after review of scope of work documents**

# Pantex Security

## Division 1 1700 Specification

# Pantex Fire Department



# Pantex Explosives Safety



# Pantex Waste Management Operations

# Pantex Solid Waste Management Units (SWMUs)

Division 1 Specifications 1600



# Pantex Explosive Safety

Division 1 Specifications 1500

# Pantex Industrial Hygiene

## Division 1 Specifications 1500

# Pantex Quality

Division 1 Specifications 1400 & 1450

# Pantex Construction & Industrial Safety

Division 1 Specification 1500

# **Pantex Construction Management (Subcontractor Technical Representative)**

**Division 1 Specification 1200**

# Pantex Project Engineer

## Past CHAMP Projects

# 12-21 Chillers





# 16-12 Chiller



# 12-86 Chiller



# Pantex Conclusion